



Comune di Cutro
Provincia di Crotone

**Piano Comunale
di
Protezione Civile**

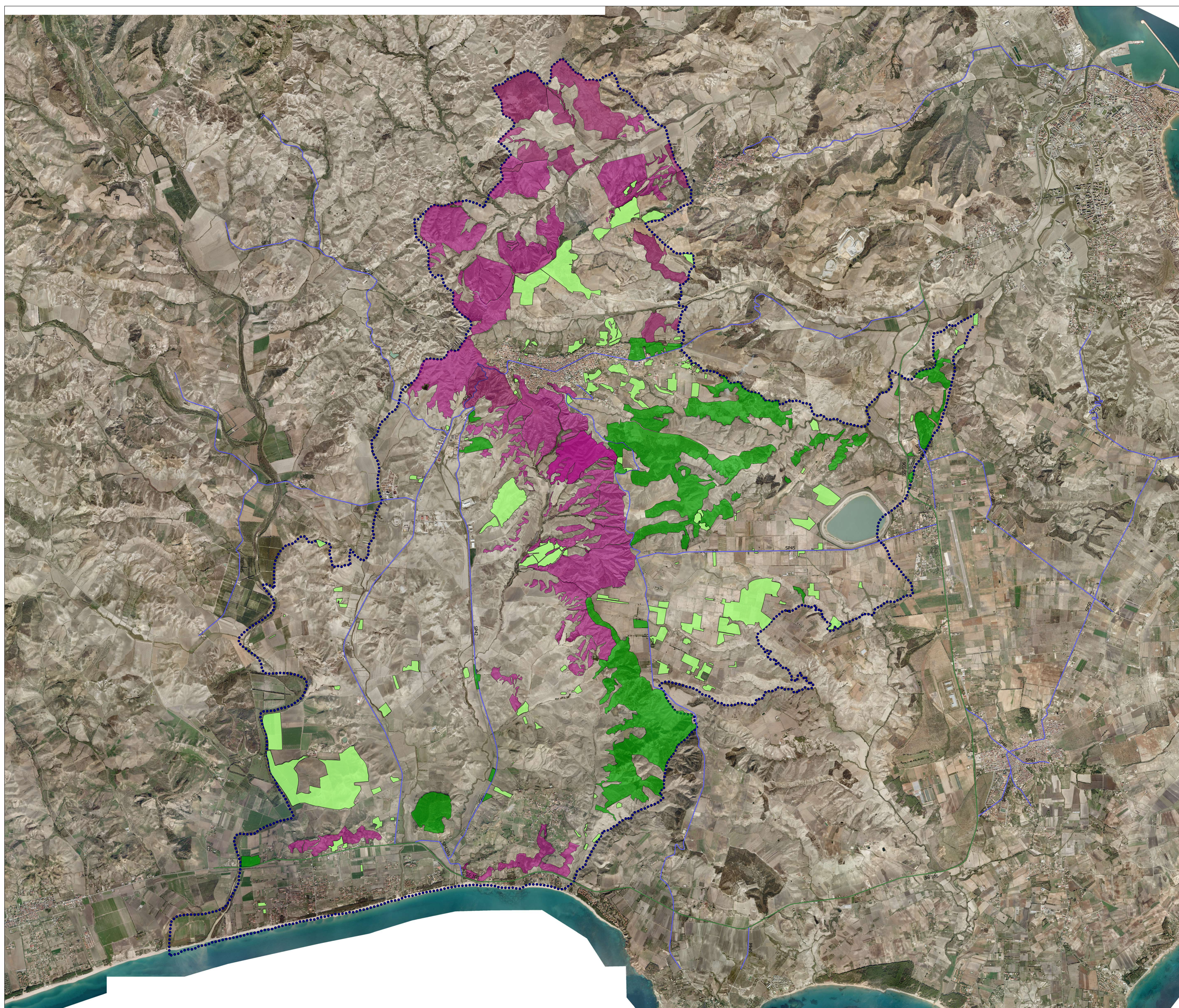
TAVOLA

20







PLANIMETRIA RISCHIO
INCENDI BOSCO

Rev. anno 2022

Arch. Luigi Benincasa
Geom. Angelo Manna
Geom. a.r. Salvatore Bonelli



Legenda

-  rischio basso
-  rischio medio
-  rischio alto
-  SS106
-  strade provinciali
-  confine comunale